

*Go Lead. Go Serve. Go Bengals!*



## January 18, 2024 - January 26, 2024

### Events coming up this next week!

#### Thursday, January 18

- [Home-Based Bengal Student Portfolio Conversations](#): Have your Bengal to share their digital portfolio with you at home!
- BMS Basketball vs LMS @ BMS - 5:30 pm 🏀

#### Friday, January 19

- [Home-Based Bengal Student Portfolio Conversations](#): Have your Bengal to share their digital portfolio with you at home!
- FCA Meeting - 7:30 AM - In the BMS Theater
- ACDA Middle School Choral All-State (Florence) 🎵
- PTO Meeting - 8:45 AM

#### Saturday, January 20

- [Home-Based Bengal Student Portfolio Conversations](#): Have your Bengal to share their digital portfolio with you at home!
- 7th Grade Boys Basketball vs LMS @ LMS

#### Monday, January 22

- The [Great Kindness Challenge](#) Spirit Week! - Team up for Kindness - Sports Apparel Day 🧢
- BMS Basketball vs PHMS @ BMS - 5:30 PM

#### Tuesday, January 23

- The [Great Kindness Challenge](#) Spirit Week! - Double your Kindness - Twin Day 🧢🧢

#### Wednesday, January 24

- The [Great Kindness Challenge](#) Spirit Week! - Hats off to Kindness - Hat Day 🧢

#### Thursday, January 25

- The Great Kindness Challenge Spirit Week! - Flex your Kindness - Athleisure Day 🧢

#### Friday, January 26

- The [Great Kindness Challenge](#) Spirit Week! - Dream of Kindness - Pajama Day 🐼
- LOCC Meeting - 7:30 AM - Counseling Conference Room
- Chick-fil-A Biscuits fundraiser in the AM

SUBMIT PARENT OR MEDICAL EXCUSES [HERE](#)

[2023-2024 BMS Student Handbook](#)

**Early Pick Up Cutoff Time is 3:00 PM. Please pick up your student prior to that time for appointments, etc.**



Magnificent Bengals,

On the heels of Martin Luther King, Jr. Day and upcoming Holocaust Remembrance Day (1/27), we are reminded of the power and importance of kindness and acceptance of others.

The week of January 22nd we will kick off our participation in the World Kindness Challenge! We encourage our Bengals to demonstrate kindness to others in a variety of ways as we continue to exemplify and embody what it means to "Lead Locally, Serve Globally." Details around the World Kindness Challenge can be found below.

On Monday, we celebrate our 8th Grade basketball players at our final home game of the season against PHMS. We would love to pack the gym to support these student athletes!

Go Bengals!

Leah Sarantopoulos



## The Great Kindness Challenge Kicks Off on 1/22!

BMS is participating in the Great Kindness Challenge the week of 1/22! From a Spirit Week to decorating coffee sleeves with positive words of encouragement for Krafty Coffee, students will be encouraged to engage in a variety of activities centered around kindness. Students are encouraged to complete at least 30 Acts of Kindness from [this](#) checklist. When signed off by a parent/guardian, students can return this to the main office to be entered into a raffle for Beech swag! Forms can be picked up in the main office and need to be turned in by Monday, 1/29. Let's spread kindness like confetti around the Beech and our community!



## America's Healthiest Schools 🏆

Earlier this year, Beechwood Middle School was named one of America's Healthiest Schools for the second year in a row! We were recently highlighted in the Healthier Generation's Annual Impact Report which is shared nationally! Click on this [link](#) and scroll down just a bit and you will see the write-up on the Beech! We are proud to be leading locally!



## ▶▶ Q2/S1 Report Cards are Now in PowerSchool! ◀◀

Bengal Families,

As you know, report cards are now distributed digitally and are accessed through the Parent Portal in PowerSchool. Please see the directions provided by Lexington School District One to guide you through how to access your child's report card. In Lexington One, World Language classes are graded on a proficiency system. And, at the Beech, our Connections classes are as well. Please take a look at [this document](#) to better understand your child's performance in proficiency-based classes. We are so proud of our Bengals!

---

## Bengals Are Balanced! Home-Based Portfolio Conversations Happening Now!

Bengal Families!

Your Bengal has been working on a digital portfolio in which they have reflected upon the first semester and set goals for the second! ALL Bengals are challenged to [share their portfolio with YOU](#) at home! The best part? Bengals who complete this will be entered into a raffle for a gift card *and* you will know what they're proud of and what they want to accomplish in the second semester! #winning

---

## ✳️ Attention 8th Grade Bengals Students and Families! ✳️

All families should have received an email from one of our magnificent school counselors to schedule your 8th grade Bengal's IGP conference! ALL 8th grade Bengals must have an IGP conference. You can even attend by ZOOM if you prefer!

Students who are interested in becoming an AVID Scholar at LHS can click the links below for more information on the AVID program!

[AVID Informational Parent Letter \(with application link\)](#)

[AVID Informational Video](#)

---

## ▶▶ We need you! ◀◀

We need you! If you are willing to spend some time at one of our home basketball games, we'd really appreciate some volunteers to run our concessions! All proceeds go to our PTO - right here at the Beech! Please sign up for a time slot by [clicking here](#)! THANK YOU!

---

## Dress Code reminder 📢

Bengal Families -

As you purchase clothes for the Spring season, please be sure that - if the clothes will be worn at the Beech - they are dress code compliant. Particularly as we prepare for the warmer weather to return in the Spring, we want to be mindful of “growth spurts” to ensure that shorts and shirts are as indicated in the [district dress code](#).

---

### **BMS Band Strawberry Fundraiser** 🍓

The BMS Band is selling strawberries January 16 - February 12. Prices are \$25 for a flat (8 containers) and \$15 for a half-flat (four containers). Donations are also accepted. Please consider helping support our band program!

---

### **BMS Musical Theatre needs NEWSPAPERS!** 📰

BMS Faculty, Staff, Students, and Families, BMS Musical Theatre needs newspapers for their upcoming production of Newsies!

Newspapers aren't the easiest to come by these days, so we're asking for donations of newspapers if you have access to any. You can drop them off in the front office and Mrs. Boatwright will collect them. Thank You!

---



Lexington High School

# RISING 9TH GRADE MEETING



JANUARY

**24**

**6:00 PM**



The LHS Counseling Department will host an evening discussing graduation requirements and course scheduling as you prepare for your IGP meeting.



- ✓ Learn about graduation requirements
- ✓ Explore course opportunities
- ✓ Discuss important information

**Join us in the LOPAC**  
(auditorium)



## Fundraiser for the Polar Plunge 🧊

Special Olympics is selling hot cocoa for \$1.00 and donuts for \$2.00 every Wednesday through January. The money is being raised for The Polar Plunge.

**POLAR PLUNGE 2/10/2024**  
**OUR HEART WILL ALWAYS FLY TO A FRIEND THAT WE FIND**

<https://www.classy.org/team/546312>

THE 4 TEACHERS WITH THE MOST DONATIONS UNDER THEIR NAME WILL TAKE THE PLUNGE!!!

Ms. Sarantopoulos	Ms. Risinger	Ms. Garcia	
Mr. Graham	Ms. Kruger	Mr. Kemerer	Ms. Munsch
Mr. Keiper	Ms. Graves	Ms. Peterson	Ms. Jordan

Hot Cocoa and doughnuts will be sold outside the cafeteria in support on Wednesday mornings leading up to the plunge

## LHS Boys Golf Team 🏌️

Tryouts for the Boys Golf team will begin on Tuesday January 30th at 4:00 at the Country Club of Lexington. This is open to any 7th-12th grade students who have their paperwork/physicals completed and approved on Big Teams (formerly PlanetHS). Interested students must have a background in golf and have all the necessary clubs/equipment needed to play.

If you have any questions, feel free to contact Coach Smith at [cbsmith@lexington1.net](mailto:cbsmith@lexington1.net).

# LHS JV Boys Soccer Open Play Information

**Open Play Dates:** January 8th and January 16th

**Location:** Soccer Practice Field located beside LHS Softball Stadium

**Time:** 4:00 PM - 5:30 PM



\*\* 7th and 8th Graders only!!

\*\* Each player must have a completed physical form dated after April 1, 2023 to participate.

\*\* Each player must complete all forms on Big Teams Website!

***BIG TEAMS INSTRUCTIONS AND PHYSICAL FORMS ARE AVAILABLE IN COACH DECELL'S ROOM (B215)!***

\*\* Questions - Contact Coach Decell at [gdecell@lexington1.net](mailto:gdecell@lexington1.net) or stop by room B215!!

**\*\*OPEN PLAY DATES ARE OPTIONAL!! TRYOUTS WILL BE HELD Jan. 31st - February 2nd!!\*\***

---

# LHS JV Girls Soccer Tryouts Information

**Tryout Dates:** January 30th - February 1st

**Location:** Soccer Practice Field located behind LHS Football Stadium

**Time:** 4:00 PM - 5:30 PM



\*\* Each player must have a completed physical form dated after April 1, 2023 to participate.

\*\* Each player must complete all forms on the Big Teams Website!

***BIG TEAMS INSTRUCTIONS AND PHYSICAL FORMS ARE IN THE FRONT OFFICE!***

\*\* Questions - Contact Coach Fryland at [cfryland@lexington1.net](mailto:cfryland@lexington1.net)

---

## Math Homework Help Center

The Math Homework Help Center is still closed for the beginning of Semester 2. We will send out an announcement in the BMS Notes once we have an official start date.

---

## Groundhog Job Shadow Day

Parents of 7th and 8th Grade students,



Our annual Groundhog Job Shadow Day will be on February 2, 2024. On this day we encourage your student to find a family or community member whose job they are interested in to shadow. If your child would like to participate in job shadow day, please submit the google form located below by January 31, 2024 so we are aware of their participation. You will find more detailed information about job shadowing and the expectations on this form. Your student must complete a Student Observation Google Form, on their district-issued device the day that they job shadow. Students will receive this google form link through their school email. The Student Observation Google Form must be completed and submitted no later than February 7th, 2024 or the job shadowing experience will be counted as an unexcused absence.



**FRIDAY, FEBRUARY 2, 2024**

7th and 8th-grade students are invited to shadow a family member or community member.

Groundhog Job Shadow Day Permission Slip

[English Permission Form](#)

[Spanish Permission Form](#)

---

## 8th Grade Trip to Washington DC

On Thursday, November 16, we held a meeting for students and their parents who are interested in participating in the 8th Grade trip to Washington, D.C. We had a great turn out but understand that not all were able to attend. If you're 8th Grade Bengal is interested in going there is still time to register! Attached are the presentation and handouts that were given during the meeting. All forms should be read and completed by both student and parent and returned to Mrs. Garrick in Room C116.

### [BMS 8th Grade Trip - Washington, D.C. \(1\).pdf](#)

[drive.google.com](#)

### [8th Grade Trip Packet 2024.pdf](#)

[drive.google.com](#)

---

**Head Track Coach:** Coach Gause: [rgause@lexington1.net](mailto:rgause@lexington1.net)

**Dates:**

**Pre-season conditioning:**

Jan. 8th - 11th 2:40 - 5:00pm

## 2024 Beechwood Middle Track & Field Information

[docs.google.com](#)

# Important Information from our Front Office

## Morning Arrival Information - IMPORTANT 🚗

Students are not able to enter BMS until 7:00 a.m. If students arrive after 8:05 a.m. they must be signed in by a parent/guardian and are considered tardy.

# Beechwood Middle Library News

## BMS LIBRARY

QUARTER  
TWO

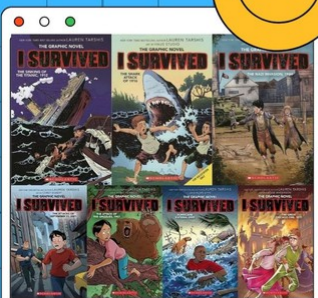
in 45 school days...

63  
CLASSES

visited the library

4,428  
CHECKOUTS

- averages a checkout every 4.25 minutes
- 349 more checkouts than first quarter



Most Borrowed:  
*I Survived* Series



---

## Overdue Library Books

Students and Parents,

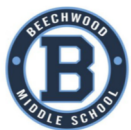
Happy New Year! Please check for overdue library books. Students have access to their current library checkouts through the Follett Destiny Discover app on their launchpad and selecting "My Stuff". Email librarian Adina Wilson at [awilson@lexington1.net](mailto:awilson@lexington1.net) with any questions.

---

# Beechwood Middle PTO News

## PTO News 🐾

- We have several positions to fill on our PTO Board. Check them out here and sign up! [PTO Board Positions](#) We would love to have you on Board!!
- Staff Appreciation: Show our BMS Staff your appreciation by donating to the [Staff Appreciation Fund](#). All donations received through this fund will be used towards our staff appreciation events throughout the year.



BEECHWOOD MIDDLE SCHOOL  
*spirit store*

---

Click here to get your BMS Gear! 🐾

<https://beechwood-middle-school-ptو.square.site/>

---

## Office Max and Office Depot

Support Beechwood Middle School when you shop at Office Max and Office Depot through the Give Back program! It is SO easy - simply provide the school's name when you check out in store or enter ID number 70245636 when you check out online.

**GIVEBACK** to schools  
Office Depot OfficeMax

SCHOOL NAME: Beechwood Middle School  
SCHOOL ID: 70245636

We'll give 5% back in credit to your school on qualifying purchases when you present this card at checkout.

Exclusions apply. Program limited to Pre-K thru 12th grade. See reverse or visit [officedepot.com/giveback](https://officedepot.com/giveback) for program terms and conditions.

---

Do you shop at Publix? If yes, read on!

Visit [Publix.com](https://publix.com) and sign up for Club Publix (FREE)\*\*!

Sign in and go to Account >My profile>My Publix Partner, choose Beechwood Middle School.

Enter your registered Club Publix phone number each time you shop and support BMS!

**\*\*Already registered? Please double check that Beechwood Middle is still selected as your Partner!**



Before you shop at Lowe's Foods, sign up (Free!) for Fresh Rewards and support Beechwood Middle School! Visit

[https://rewards.lowesfoods.com/Account/SelectCard?](https://rewards.lowesfoods.com/Account/SelectCard?mode=CartToClass)

[mode=CartToClass](https://rewards.lowesfoods.com/Account/SelectCard?mode=CartToClass) to enroll your Fresh Rewards account. Don't know your Fresh Rewards number? It's okay! You can look up your account with just your phone number (click under the Continue button).



**Already registered? Please check to be sure Beechwood Middle is still selected!**

## BMS Resources 🐅

[2023-2024 BMS Student Handbook](#)

[Check out our BMS Webpage](#)

[Family Technology Connections Newsletter December/January](#)

[Financial Assistance](#)

[Need ParentSquare Help?](#)

If you need support in using ParentSquare, this resource may be helpful to you as we transition to this communication platform.

---

## BMS Event Photos! 📷



### Holiday Orchestra Performance 2023

131 new items added to shared album

🔗 [photos.app.goo.gl](https://photos.app.goo.gl)



### Winter Chorus Concert

64 new items added to shared album

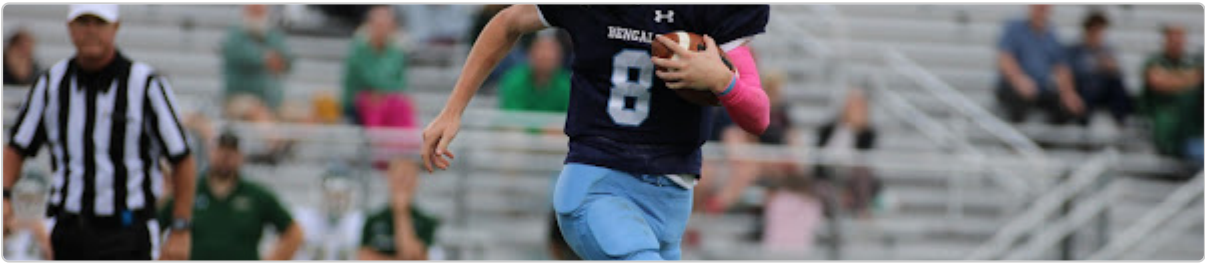
🔗 [photos.app.goo.gl](https://photos.app.goo.gl)



### 23/24 BMS Volleyball

156 new items added to shared album

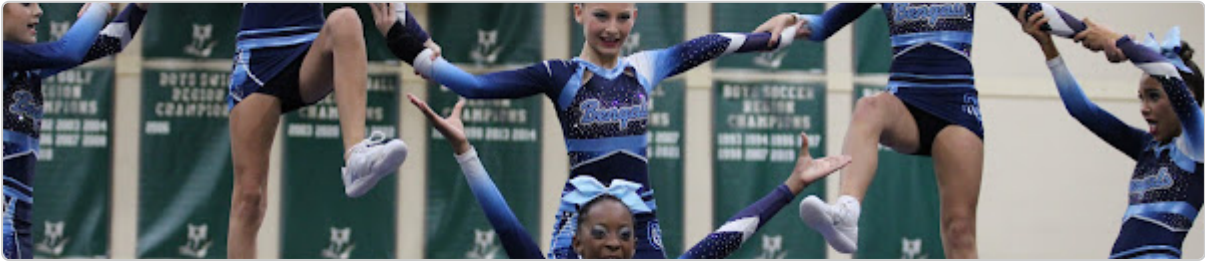
🔗 [photos.app.goo.gl](https://photos.app.goo.gl)



## 23/24 BMS Football

447 new items added to shared album

[photos.app.goo.gl](https://photos.app.goo.gl)



## 23/24 Cheer

211 new items added to shared album

[photos.app.goo.gl](https://photos.app.goo.gl)



## 23/24 8th grade Football, Cheer, Dance Football Recognition

119 new items added to shared album

[photos.app.goo.gl](https://photos.app.goo.gl)

---



## Beechwood Middle School

Beechwood is using Smore to create beautiful newsletters