

*Go Lead. Go Serve. Go Bengals!*



## November 30, 2023 - December 9, 2023

### Events coming up this next week! 📅

#### • Thursday, November 30

- Basketball Game vs MGMS @ BMS - 5:30 pm 🏀

#### Monday, December 4

- Winter Wonderland Spirit Week - Dress like a Holiday Character 🧑
- Stuff-A-Stocking Drive begins! - See below for more information ↓
- Basketball vs CSMS @ CSMS - 6:00 pm 🏀

#### Tuesday, December 5

- Winter Wonderland Spirit Week - Winter Hat & Holiday Socks 🧢
- SIC Meeting - 1:15 PM

#### Wednesday, December 6

- Winter Wonderland Spirit Week - Wear Holiday Colors

#### Thursday, December 7

- Winter Wonderland Spirit Week - Ugly Holiday Sweater 🧶
- Pelicans Snoballs at lunches
- Bengal Choir - Five Points Choral Tour 🎵
- Band Concert - 7pm 🎷
- Basketball vs WKMS @BMS - 5:30 pm

#### Friday, December 8

- Winter Wonderland Spirit Week - Friends Matching Holiday Pajamas 🌲
- FCA Meeting - In the Theater @ 7:30 AM

#### Saturday, December 9

- Basketball @ BMS vs Stover - Games start at 8:30 am 🏀

SUBMIT PARENT OR MEDICAL EXCUSES [HERE](#)

**Early Pick Up Cutoff Time is 3:00 PM. Please pick up your student prior to that time for appointments, etc.**

---



### **Dress Code reminder** 🔊

Bengal Families -

As you purchase holiday “wish list” and/or clothes for the Spring season, please be sure that - if the clothes will be worn at the Beech - they are dress code compliant. Particularly as we prepare for the warmer weather to return in the Spring, we want to be mindful of “growth spurts” to ensure that shorts and shirts are as indicated in the [district dress code](#).

---

### **Winter iReady Assessments** 📄

**Students will be participating in our Winter iReady Math Assessment on Tuesday, December 5th.** It is extremely important that students are present for these assessments and that students bring **headphones that can be plugged into their iPad** on this day. iReady assessments have audio and video segments that are important for students to be able to hear. We can't wait to see the growth our Bengals have made since the Fall!

---

# Winter Wonderland Spirit Week

December 4th - 8th

Monday -- Dress Like a Holiday Character

Tuesday -- Winter Hat & Holiday Socks

Wednesday -- Wear Holiday Colors

(red/white, blue/silver, red/green, red/gold, red/green/black, etc.)

Thursday -- Ugly Holiday Sweater (competition at lunches)

Friday -- FRIENDS Matching Holiday Pajama  
(\*and don't forget to wear your slippers!)



StuCo  
Mission  
Lexington  
Stuff-A-  
Stocking  
Drive:



Dec. 4 - 8th

Bring stocking stuffer donations to the StuCo Candy Cane table in the atrium each morning in exchange for a mini candy cane. (1 per person per morning)



# Stuff-A-Stocking Item Suggestions

The KEY is to think AGE appropriate and small in size to fit in the stocking!!

## School Supplies

12 - 24 pack of crayons  
12 pack colored pencils  
markers  
Pack of fun erasers  
Pack of pencils  
hand pencil sharpener  
Glue sticks  
Small notebooks/journals  
Pack of Pens  
Solar powered calculator  
Pack of Blank index cards  
Small ruler  
Small roll of tape

## Clothing Items:

beanie/hat  
mittens/gloves  
Fun Socks  
sunglasses

## Art Supplies

Modeling clay  
Playdough  
popsicle sticks  
Pack of Stickers  
Small coloring books  
watercolors  
Small make-it-yourself craft kit

## OTHER:

SMALL Toy  
Small 24 - 48 piece puzzles  
Yo-yo  
Small frisbee  
Foam ball  
Jump rope  
Small flashlight (w/batteries if needed)  
Small musical instrument  
Small book



## Toiletry items:

character washcloth  
small Bubble bath  
Bathtub crayons  
Bath bombs or fizzy tabs  
Package of Hair ties (or other hair items)  
Package of Fun chapstick  
Travel size shampoo/conditioner  
Travel size body wash  
Deodorant  
comb/brush & Compact mirror  
Box of Small Adhesive bandages  
Toothbrush & Travel toothpaste

## Individually Wrapped Candy:

Bag of individually wrapped candy

---

## ►► We need you! ◀◀

We need you! If you are willing to spend some time at one of our home basketball games, we'd really appreciate some volunteers to run our concessions! All proceeds go to our PTO - right here at the Beech! Please sign up for a time slot by [clicking here](#)! THANK YOU!

---

## ►► Help needed: Bottles for Projects ◀◀

Students - please bring in your empty soda, water or Gatorade bottles to help with school projects! Boxes will be set up in the Atrium and lunch room! We will be collecting these until the start of Winter Break. Thank you for your help!

---

## DID YOU KNOW?

You can find photo galleries from many BMS activities, sports, and performances linked to the end of the BMS Notes! Check out past BMS Notes to view these galleries. These photos were taken by our BMS Ambush Staff members! Enjoy!



# share the glove

As the temperatures outside drop, having a hat and warm pair of mittens is something that many of us may take for granted.

Join me and GIVATION, a local 501c3 nonprofit organization, as we collect items to warm the hands and hearts of the homeless men, women and children in our community.

**Donate new gloves,  
mittens, scarves and  
hats to those in need.**

*Please, no used items or cash donations.*

Help me teach our children a valuable lesson of how we can all make a difference in our community by giving to those in need, please consider making a donation today.



1340 Hwy 378  
Lexington, SC 29072

**GIVATION**

Learn how your donation  
can be tax deductible at  
GIVATION.org

**All donations are needed by Friday, December 8th**

Please drop off donations to Ms. Peterson's classroom  
Room C112/ Mrs. Jordan in C110

Collected items will be distributed by my class to Samaritan's Well, a women and children's shelter serving Lexington, as well as Transition's Homeless Shelter in Columbia.

**For more information, please contact:**

Anne' Peterson and Whitney Jordan

[apeterson@lexington1.net](mailto:apeterson@lexington1.net)

(803) 821-5765

*Important Information  
From our Counselors*

## **Attention 8th Graders! 🍀 Opportunity!**

Who wants to win \$1000? Plus \$500 for our BMS Science department!

Yes, it's all TRUE! Just follow the directions [at this link](#) and the winner could be YOU!"

Good luck to you all. If you have any questions about this scholarship you may contact Mrs. Clarke at [sclarke@lexington1.net](mailto:sclarke@lexington1.net) or 803-821-5712.

---

# Important Information from our Front Office

## Parents - We need your help....

1) **Forgotten Items** - we have had an overwhelming amount of forgotten items being dropped off in the Front Office. The best way you can help us is making sure that your Bengal has everything that they need for a successful school day when they arrive in the morning. We appreciate your help with this!



2) **Lost and Found Items** - Please add your student's names to their lunch boxes, jackets or other personal items so that we can get them returned to your student as soon as possible. We have had several lunch boxes and jackets found with no names, so we are unable to reunite these items with their owners. Thank you so much for your help with this!

---

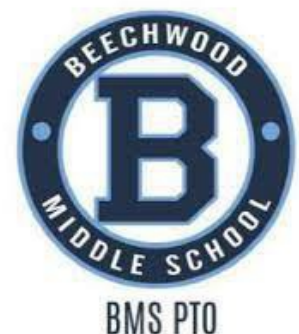
## Morning Arrival Information - IMPORTANT 🚗

Students are not able to enter BMS until 7:00 a.m. If students arrive after 8:05 a.m. they must be signed in by a parent/guardian and are considered tardy.

# Beechwood Middle PTO News

## PTO News 🐾

- We have several positions to fill on our PTO Board. Check them out here and sign up! [PTO Board Positions](#) We would love to have you on Board!!
- Staff Appreciation: Show our BMS Staff your appreciation by donating to the [Staff Appreciation Fund](#). All donations received through this fund will be used towards our staff appreciation events throughout the year.





BEECHWOOD MIDDLE SCHOOL  
*spirit store*

Click here to get your BMS Gear! 🖱️

<https://beechwood-middle-school-pto.square.site/>

---

Do you shop at Publix? If yes, read on!

Visit [Publix.com](https://publix.com) and sign up for Club Publix (FREE)\*\*!

Sign in and go to Account >My profile>My Publix Partner, choose Beechwood Middle School.

Enter your registered Club Publix phone number each time you shop and support BMS!

**\*\*Already registered? Please double check that Beechwood Middle is still selected as your Partner!**



---

Before you shop at Lowe's Foods, sign up (Free!) for Fresh Rewards and support Beechwood Middle School! Visit

[https://rewards.lowesfoods.com/Account/SelectCard?](https://rewards.lowesfoods.com/Account/SelectCard?mode=CartToClass)

[mode=CartToClass](https://rewards.lowesfoods.com/Account/SelectCard?mode=CartToClass) to enroll your Fresh Rewards account. Don't know your Fresh Rewards number? It's okay! You can look up your account with just your phone number (click under the Continue button).



**Already registered? Please check to be sure Beechwood Middle is still selected!**

---

## BMS Resources 🐅

[2023-2024 BMS Student Handbook](#)

[Check out our BMS Webpage](#)

[Financial Assistance](#)



## Need ParentSquare Help?

If you need support in using ParentSquare, this resource may be helpful to you as we transition to this communication platform.

---

### BMS Event Photos! 📸



#### Winter Chorus Concert

64 new items added to shared album

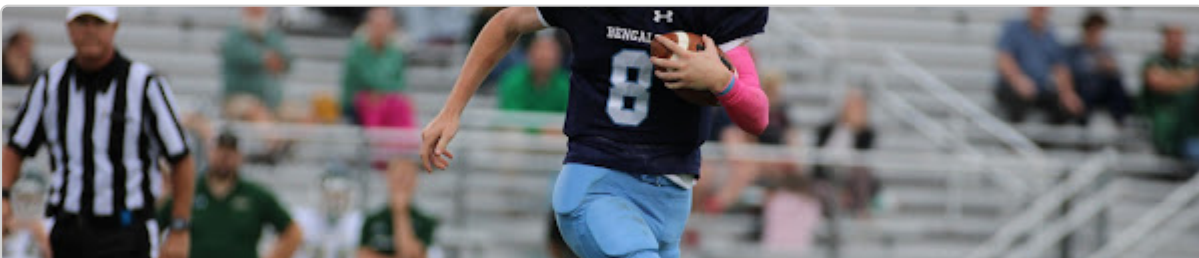
[🔗 photos.app.goo.gl](https://photos.app.goo.gl)



#### 23/24 BMS Volleyball

156 new items added to shared album

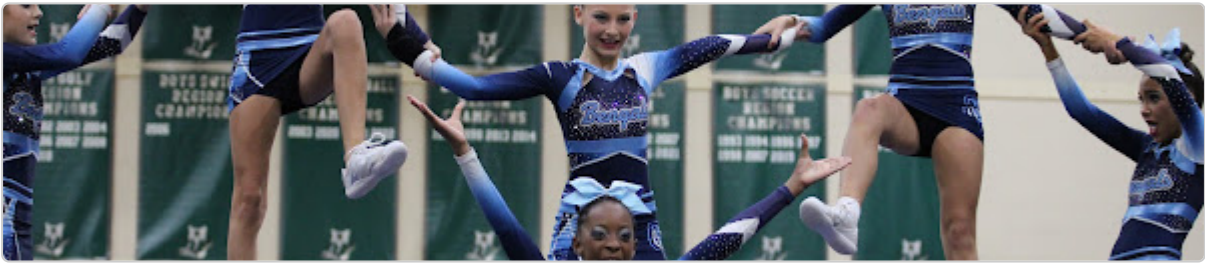
[🔗 photos.app.goo.gl](https://photos.app.goo.gl)



#### 23/24 BMS Football

447 new items added to shared album

[🔗 photos.app.goo.gl](https://photos.app.goo.gl)



**23/24 Cheer**

211 new items added to shared album

[photos.app.goo.gl](https://photos.app.goo.gl)



**23/24 8th grade Football, Cheer, Dance Football Recognition**

119 new items added to shared album

[photos.app.goo.gl](https://photos.app.goo.gl)





# Beechwood Middle School

Beechwood is using Smore to create beautiful newsletters