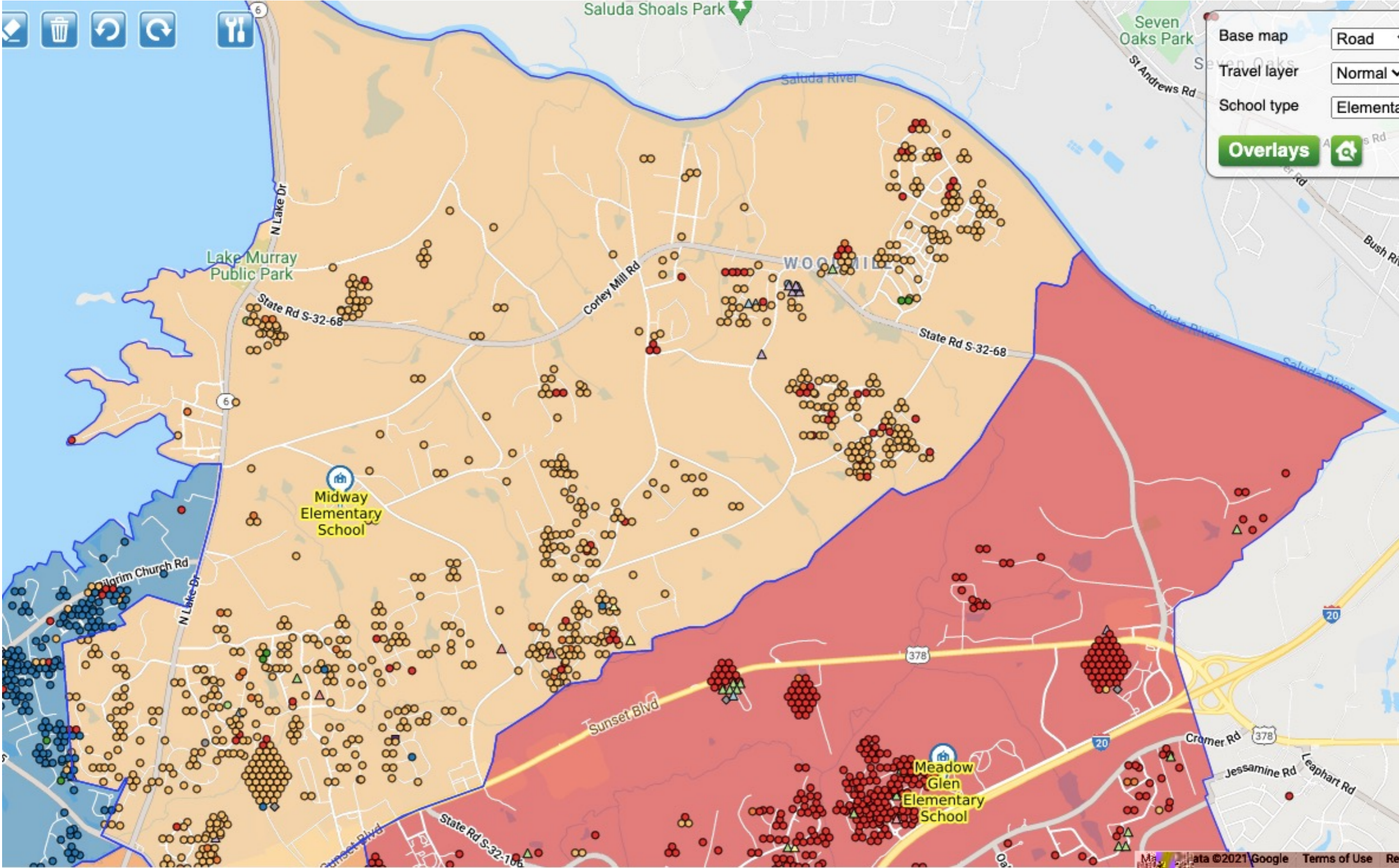
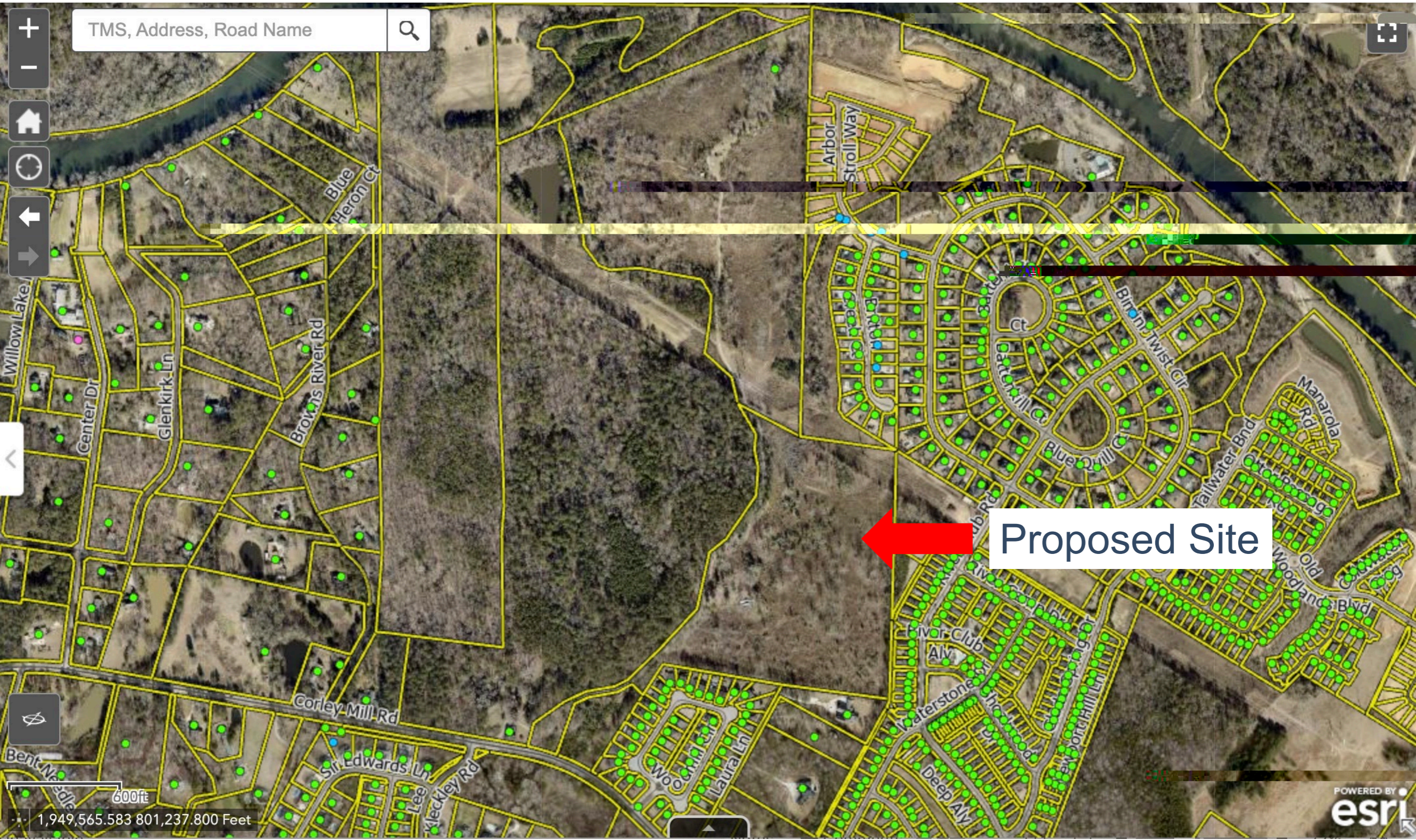
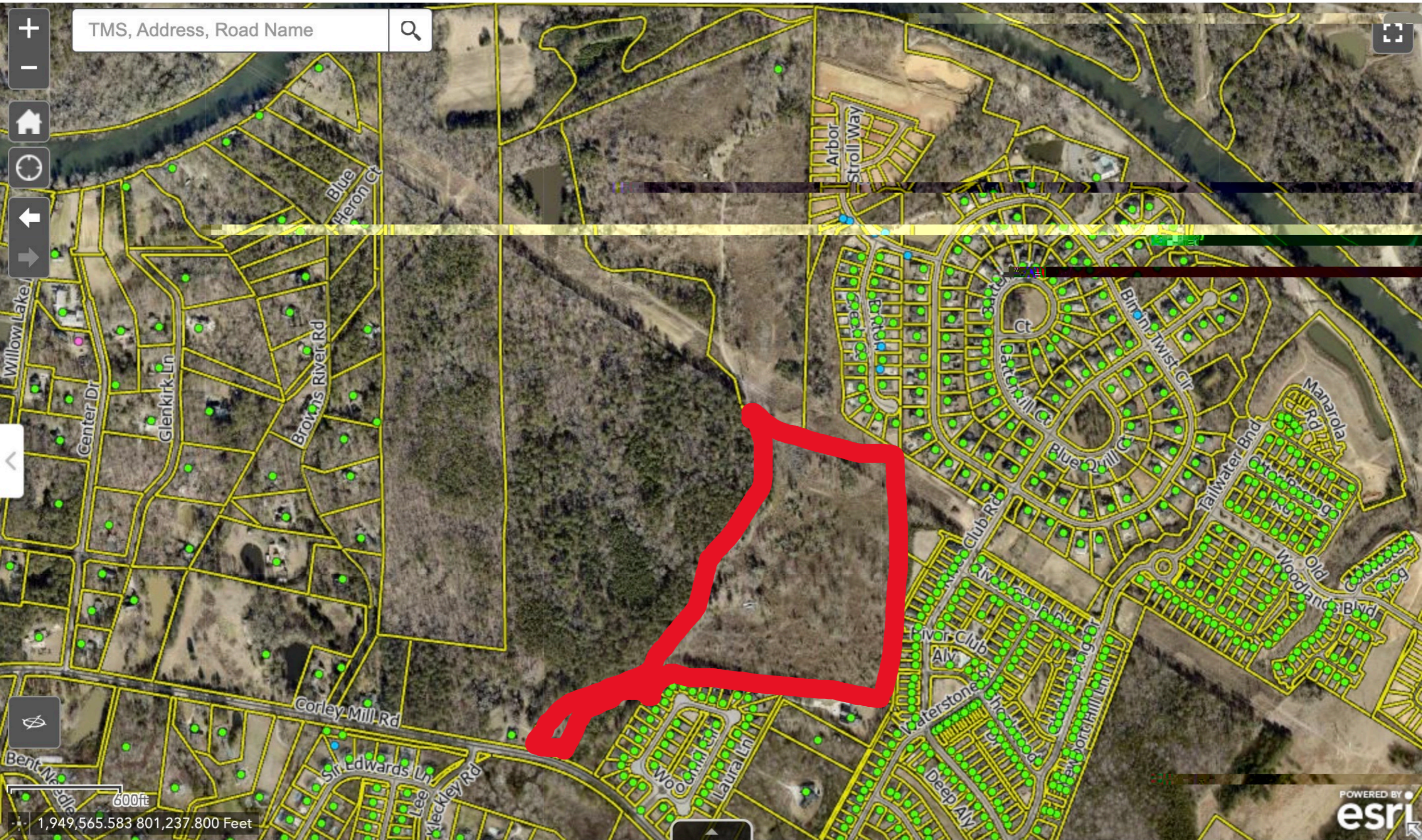


# **River Bluff Area Elementary School**

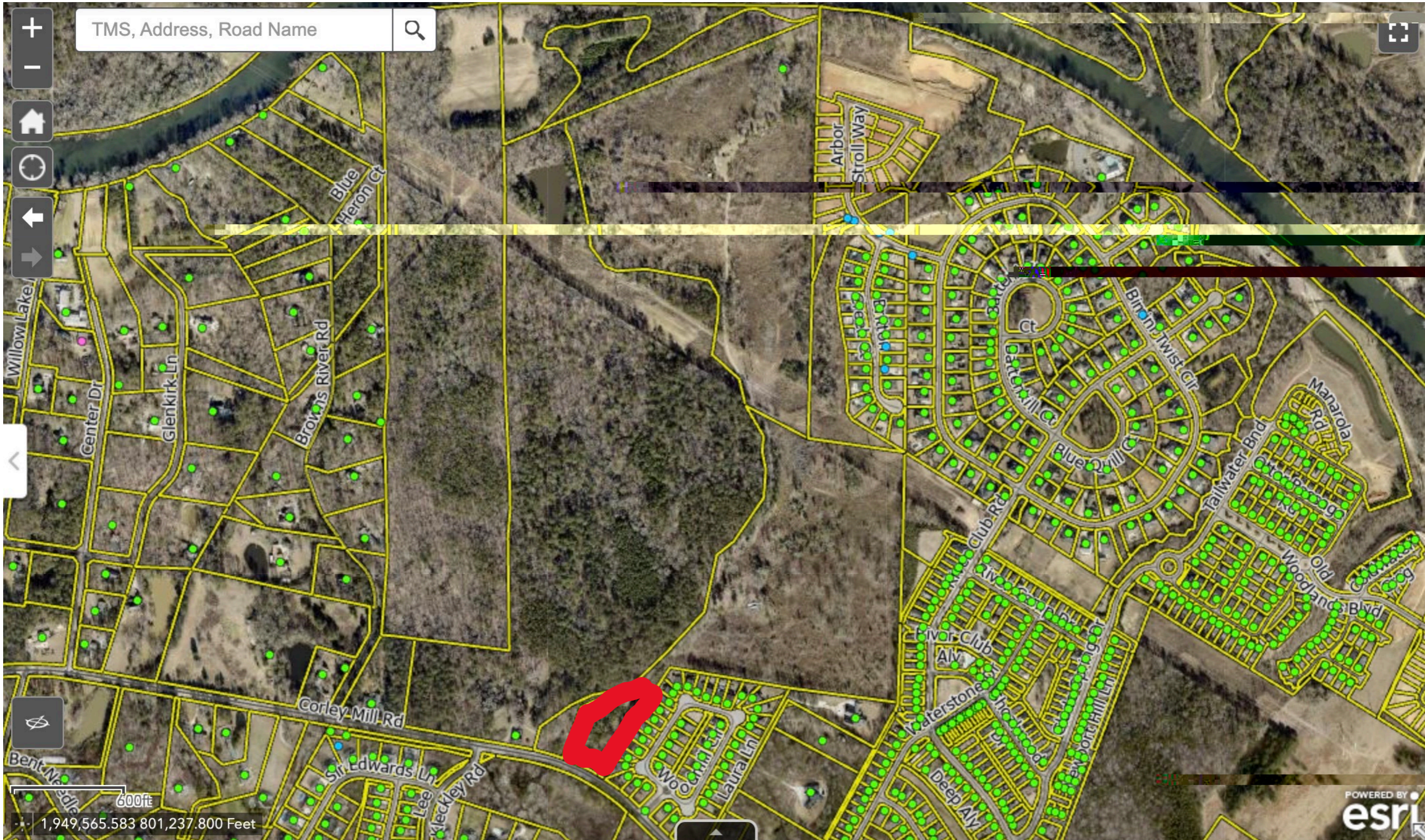




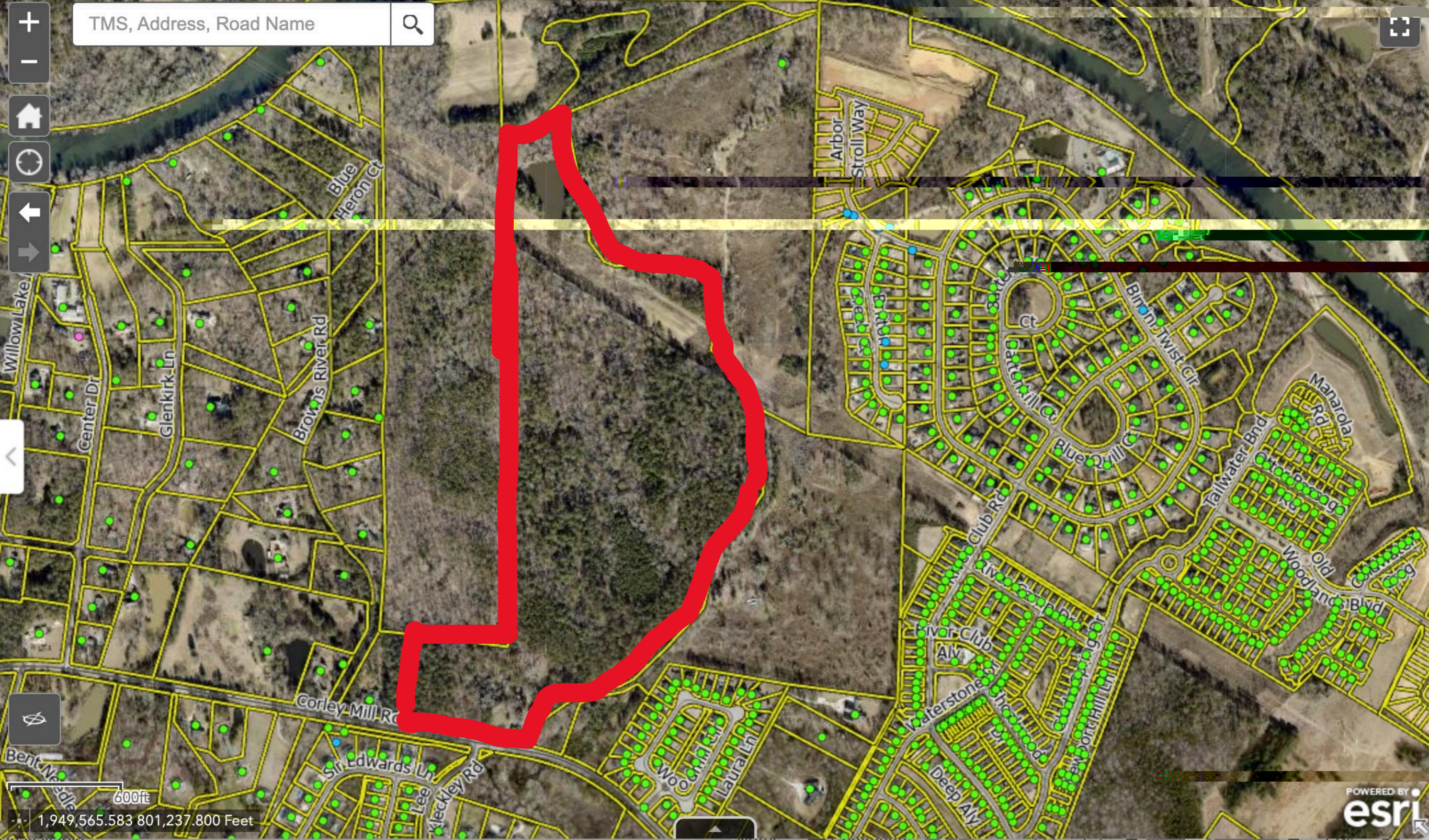
All of this site for building location. (Approximately 30 acres)



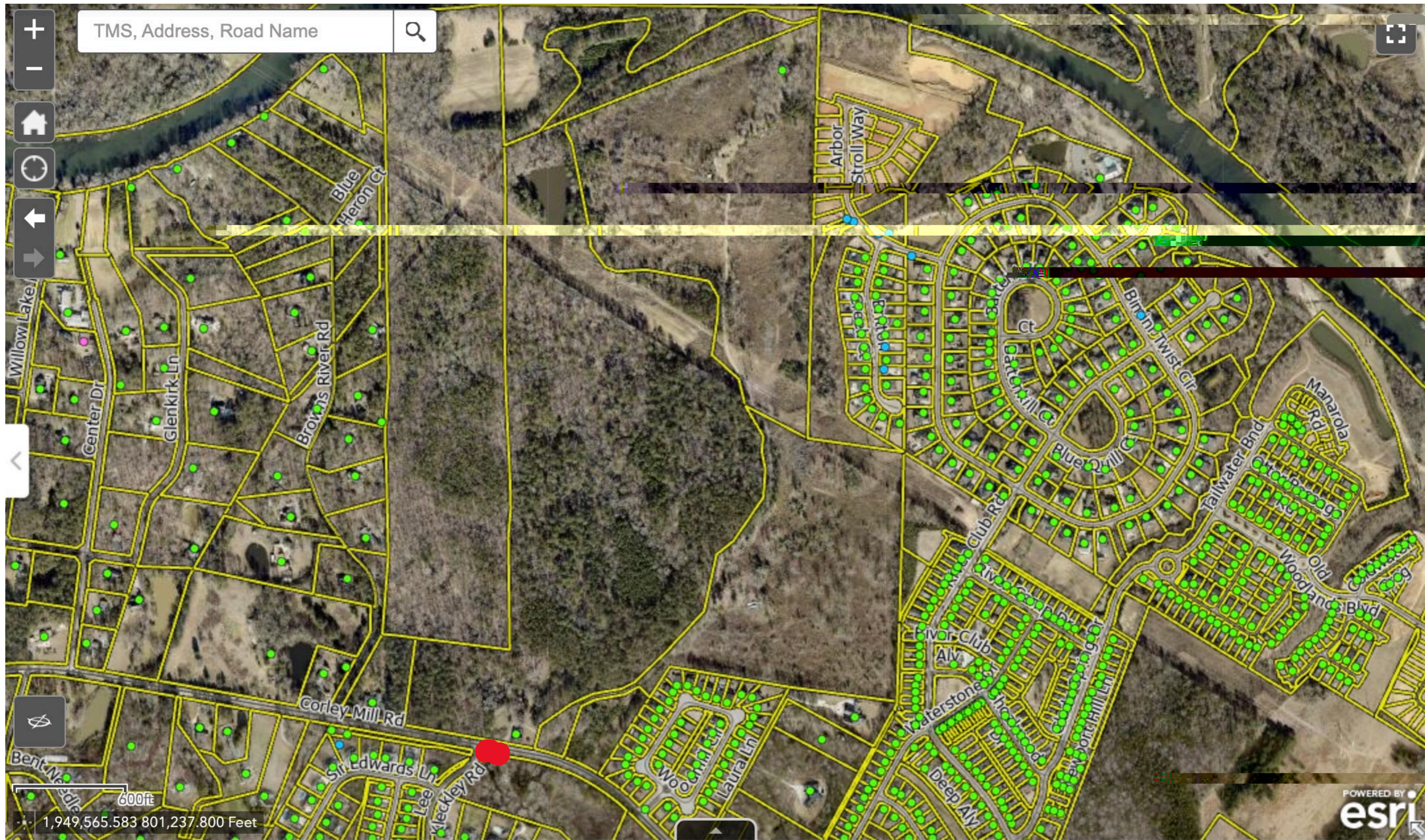
All of this site. ( Approximately 2.26 acres)



A portion of this site for boulevard entrance and stacking  
(Approximately 9.5 acres)



All of this site. Approximately (0.04 acres)

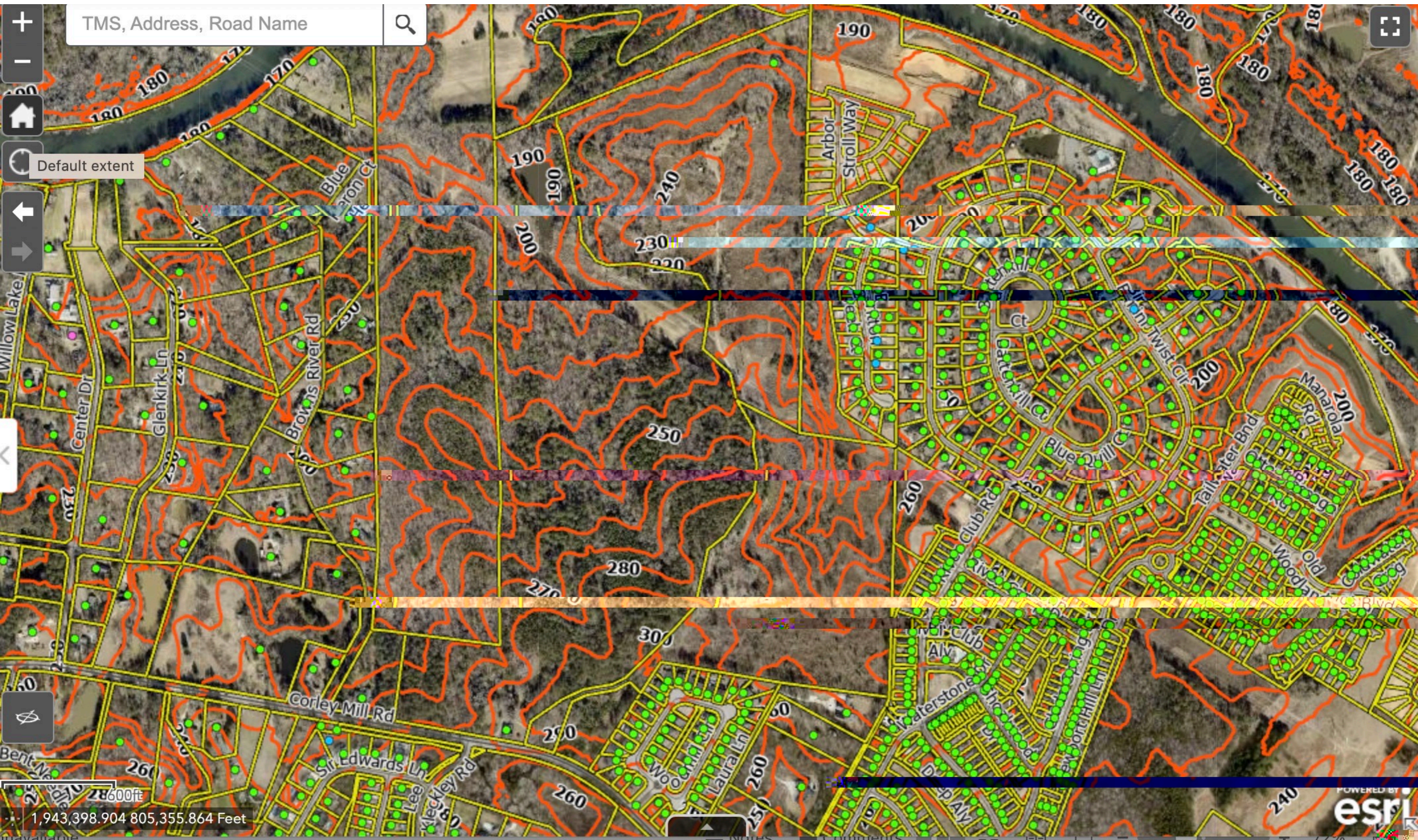


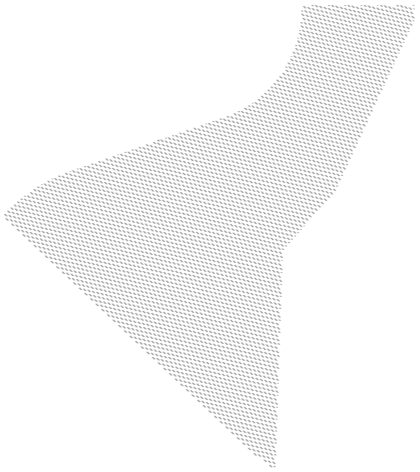
# Wetlands – No significant wetlands present.





# Topography





# SCDOT Traffic Counts 2015-2020

- 2020 Traffic Counts
- 2019 Traffic Counts
- 2018 Traffic Counts
- 2017 Traffic Counts
- 2016 Traffic Counts
- 2015 Traffic Counts

[Send keyboard focus to media](#)

Welcome to SCDOT's Traffic Count Comparison application. This application will allow you to view traffic count data from the period of 2009-2019.

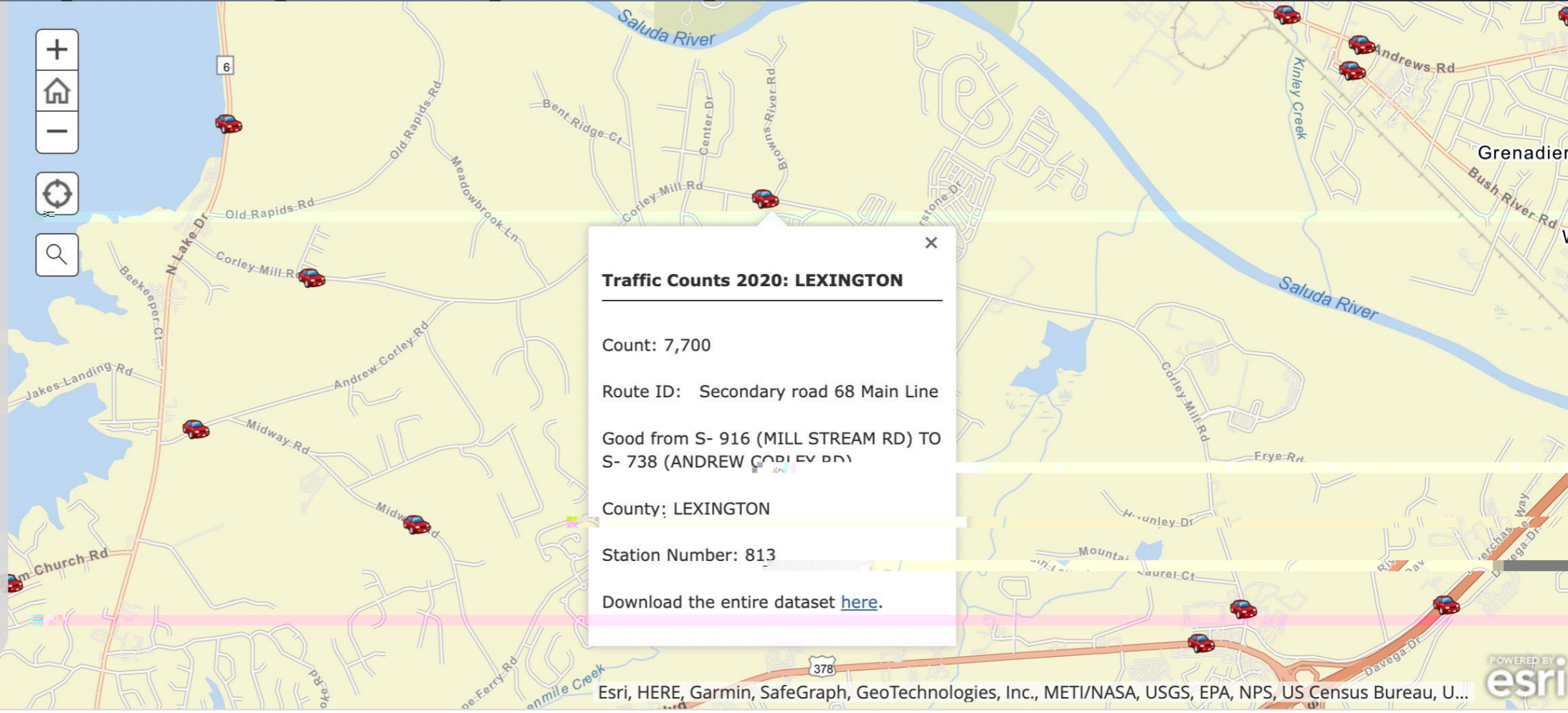
To view this data in tabular form; click [here](#)

To download the entire dataset, click the link in the popup.


To view pdf maps of the station locations by county or metro area; click [here](#).

To search for a specific location, click the magnifying glass to the right and type in the **full address including city and state**.

If you are using a GPS enabled device, click on the locate me button. The locate me button is directly above the magnifying glass.



# SCDOT Traffic Counts 2015-2020

A product of SCDOT GIS/Mapping   



2020 Traffic Counts

2019 Traffic Counts

2018 Traffic Counts

2017 Traffic Counts

2016 Traffic Counts

2015 Traffic Counts

Welcome to SCDOT's Traffic Count Comparison application. This application will allow you to view traffic count data from the period of 2009-2019.

To view this data in tabular form; click [here](#)

To download the entire dataset, click the link in the popup.

To view pdf maps of the station locations by county or metro area; click [here](#).

To search for a specific location, click the magnifying glass to the right and type in the **full address including city and state**.

If you are using a GPS enabled device, click on the locate me button. The locate me button is directly above the magnifying glass.



**Traffic Counts 2020: LEXINGTON**

Count: 3,100

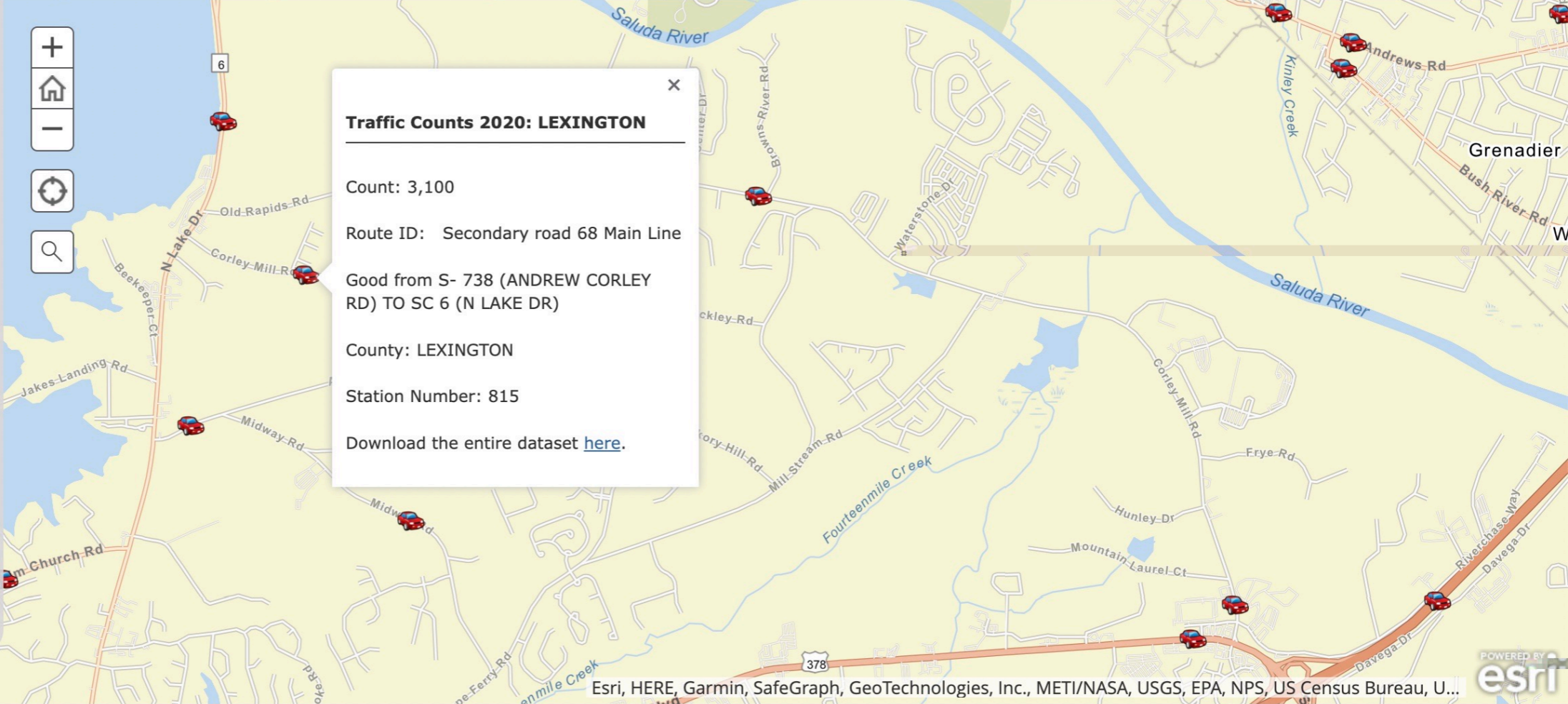
Route ID: Secondary road 68 Main Line

Good from S- 738 (ANDREW CORLEY RD) TO SC 6 (N LAKE DR)

County: LEXINGTON

Station Number: 815

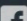

Download the entire dataset [here](#).



Site02 (1).pdf

Show All

# SCDOT Traffic Counts 2015-2020

A product of SCDOT GIS/Mapping   



- 2020 Traffic Counts
- 2019 Traffic Counts
- 2018 Traffic Counts
- 2017 Traffic Counts
- 2016 Traffic Counts
- 2015 Traffic Counts

Welcome to SCDOT's Traffic Count Comparison application. This application will allow you to view traffic count data from the period of 2009-2019.

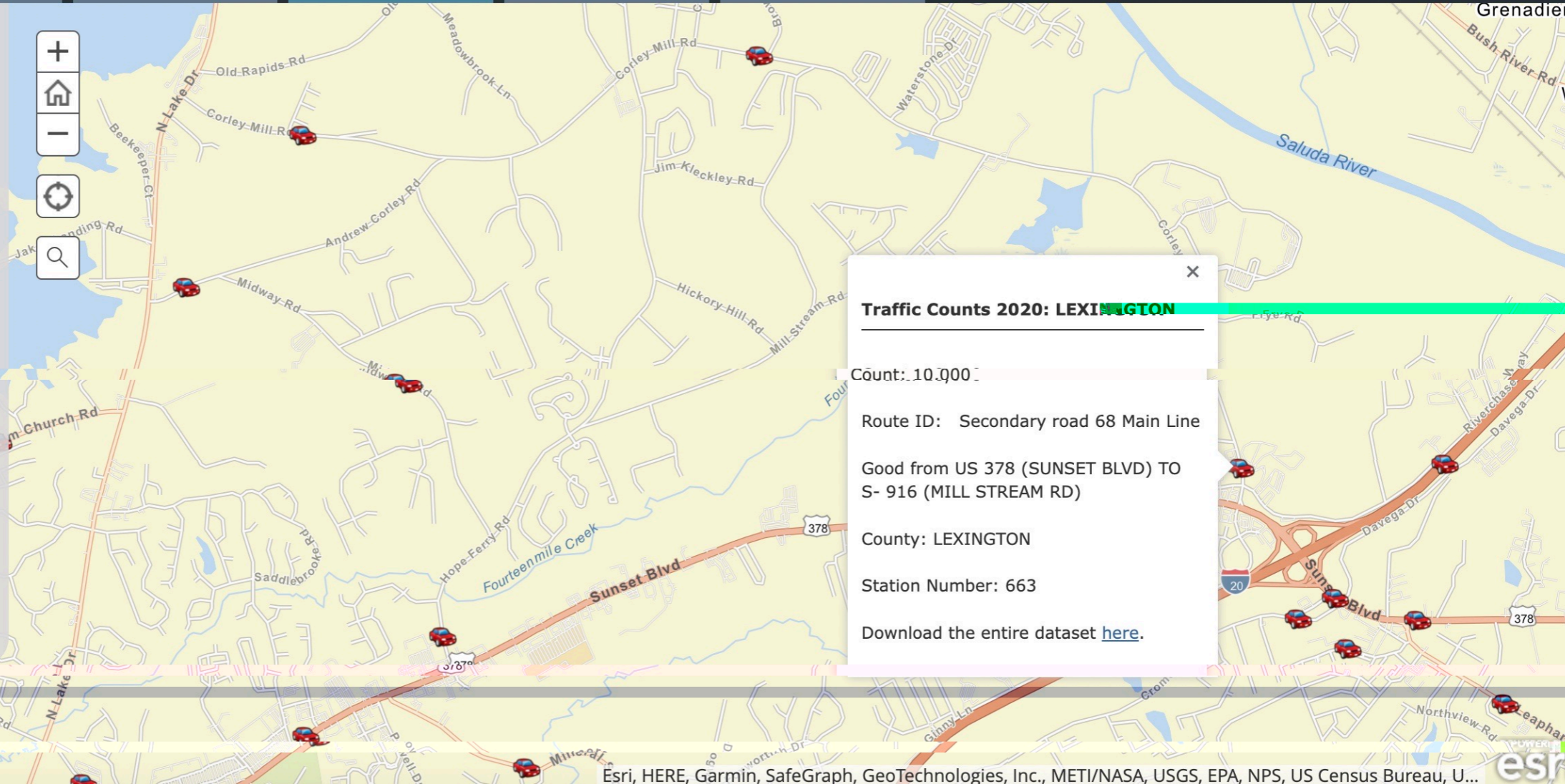
To view this data in tabular form; click [here](#)

To download the entire dataset, click the link in the popup.

To view pdf maps of the station locations by county or metro area; click [here](#).

To search for a specific location, click the magnifying glass to the right and type in the **full address including city and state.**

If you are using a GPS enabled device, click on the locate me button. The locate me button is directly above the magnifying glass.



**Traffic Counts 2020: LEXINGTON**

Count: 10,000

Route ID: Secondary road 68 Main Line

Good from US 378 (SUNSET BLVD) TO S- 916 (MILL STREAM RD)

County: LEXINGTON

Station Number: 663

Download the entire dataset [here](#).

Esri, HERE, Garmin, SafeGraph, GeoTechnologies, Inc., METI/NASA, USGS, EPA, NPS, US Census Bureau, U...

# SCDOT Traffic Counts 2015-2020

A product of SCDOT GIS/Mapping



2020 Traffic Counts

2019 Traffic Counts

2018 Traffic Counts

2017 Traffic Counts

2016 Traffic Counts

2015 Traffic Counts

Welcome to SCDOT's Traffic Count Comparison application. This application will allow you to view traffic count data from the period of 2009-2019.

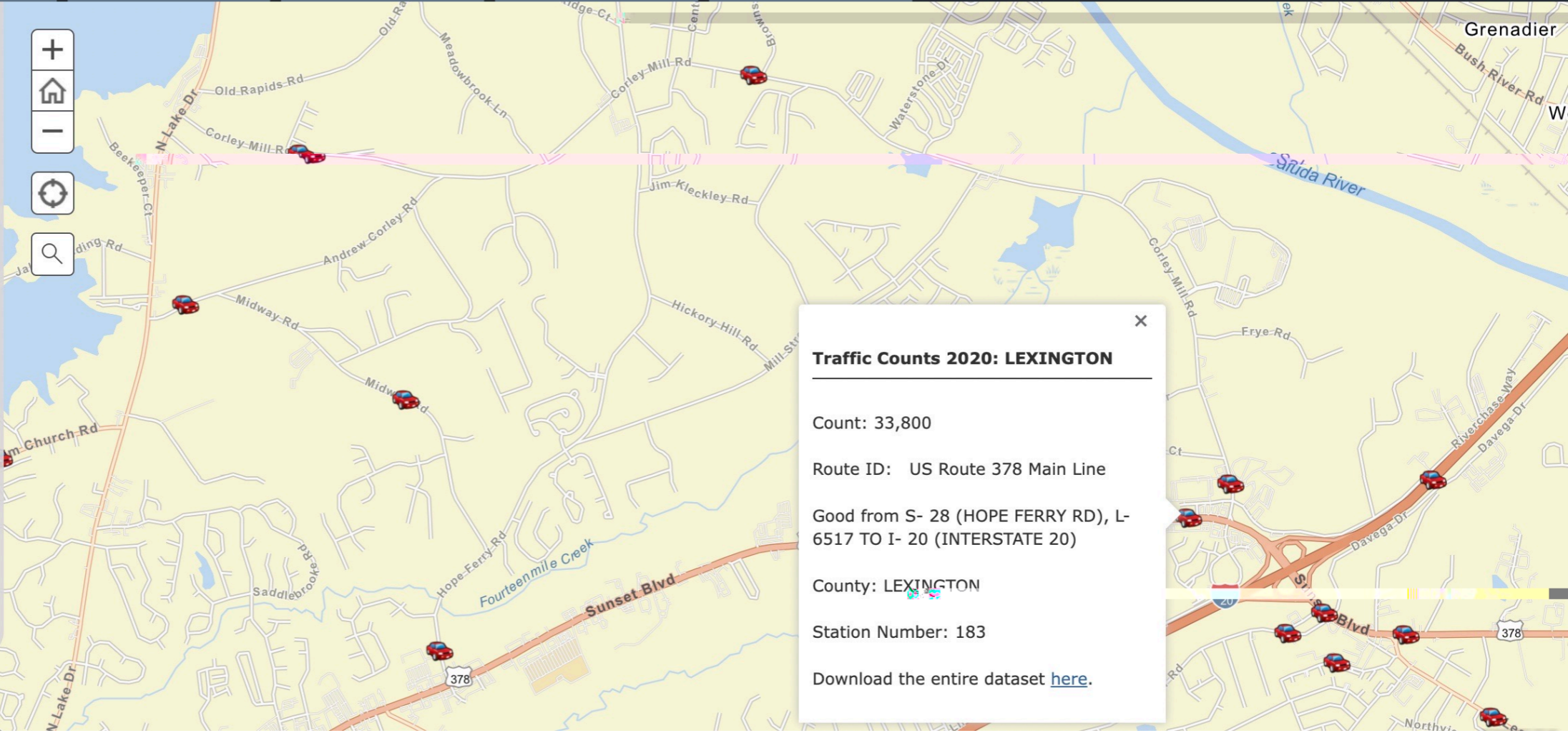
To view this data in tabular form; click [here](#)

To download the entire dataset, click the link in the popup.

To view pdf maps of the station locations by county or metro area; click [here](#).

To search for a specific location, click the magnifying glass to the right and type in the **full address including city and state.**

If you are using a GPS enabled device, click on the locate me button. The locate me button is directly above the magnifying glass.



# SCDOT Traffic Counts 2015-2020

- 2020 Traffic Counts
- 2019 Traffic Counts
- 2018 Traffic Counts
- 2017 Traffic Counts
- 2016 Traffic Counts
- 2015 Traffic Counts

Welcome to SCDOT's Traffic Count Comparison application. This application will allow you to view traffic count data from the period of 2009-2019.

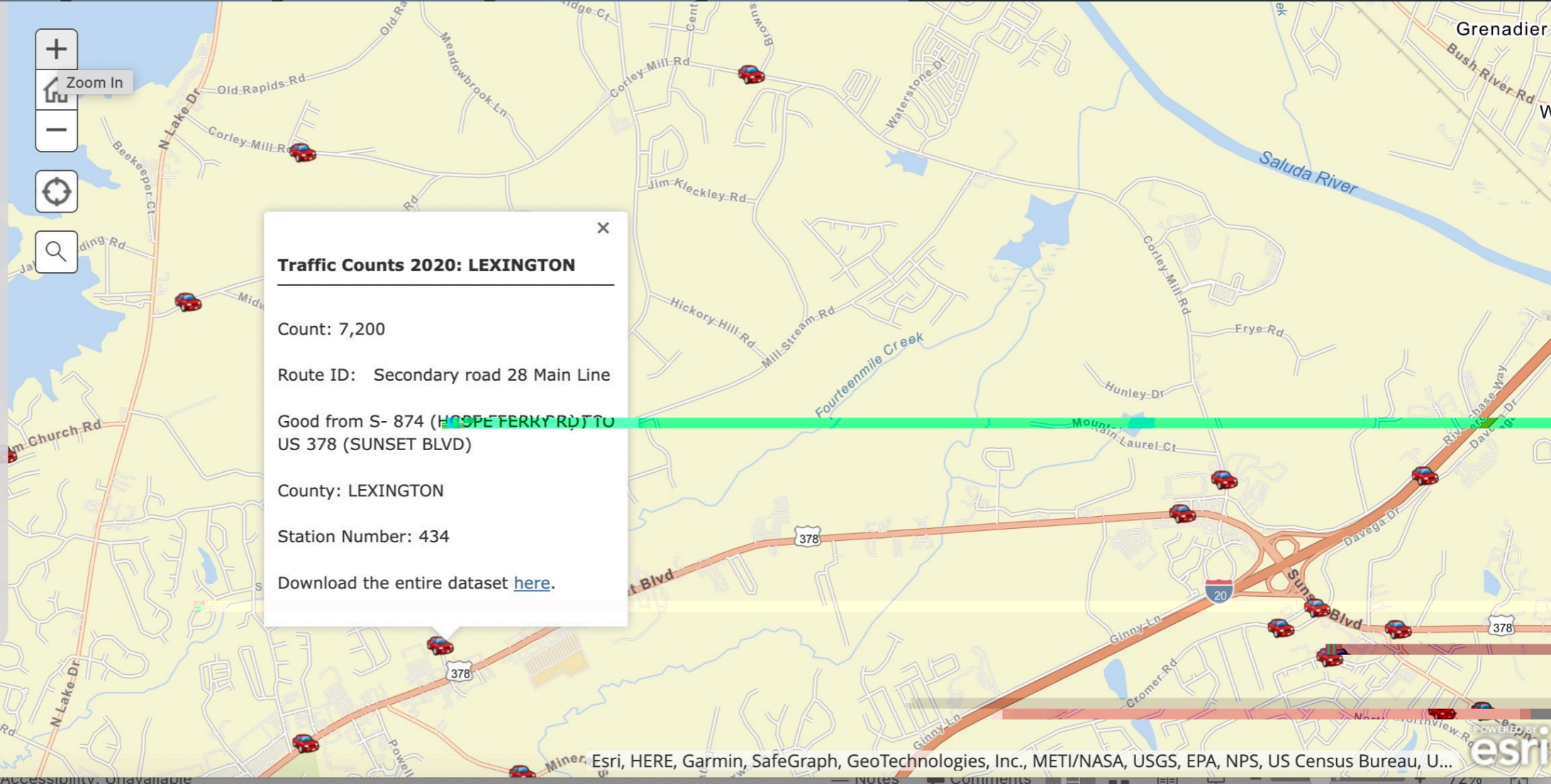
To view this data in tabular form; click [here](#)

To download the entire dataset, click the link in the popup.

To view pdf maps of the station locations by county or metro area; click [here](#).

To search for a specific location, click the magnifying glass to the right and type in the **full address including city and state.**

If you are using a GPS enabled device, click on the locate me button. The locate me button is directly above the magnifying glass.



**Traffic Counts 2020: LEXINGTON**

Count: 7,200

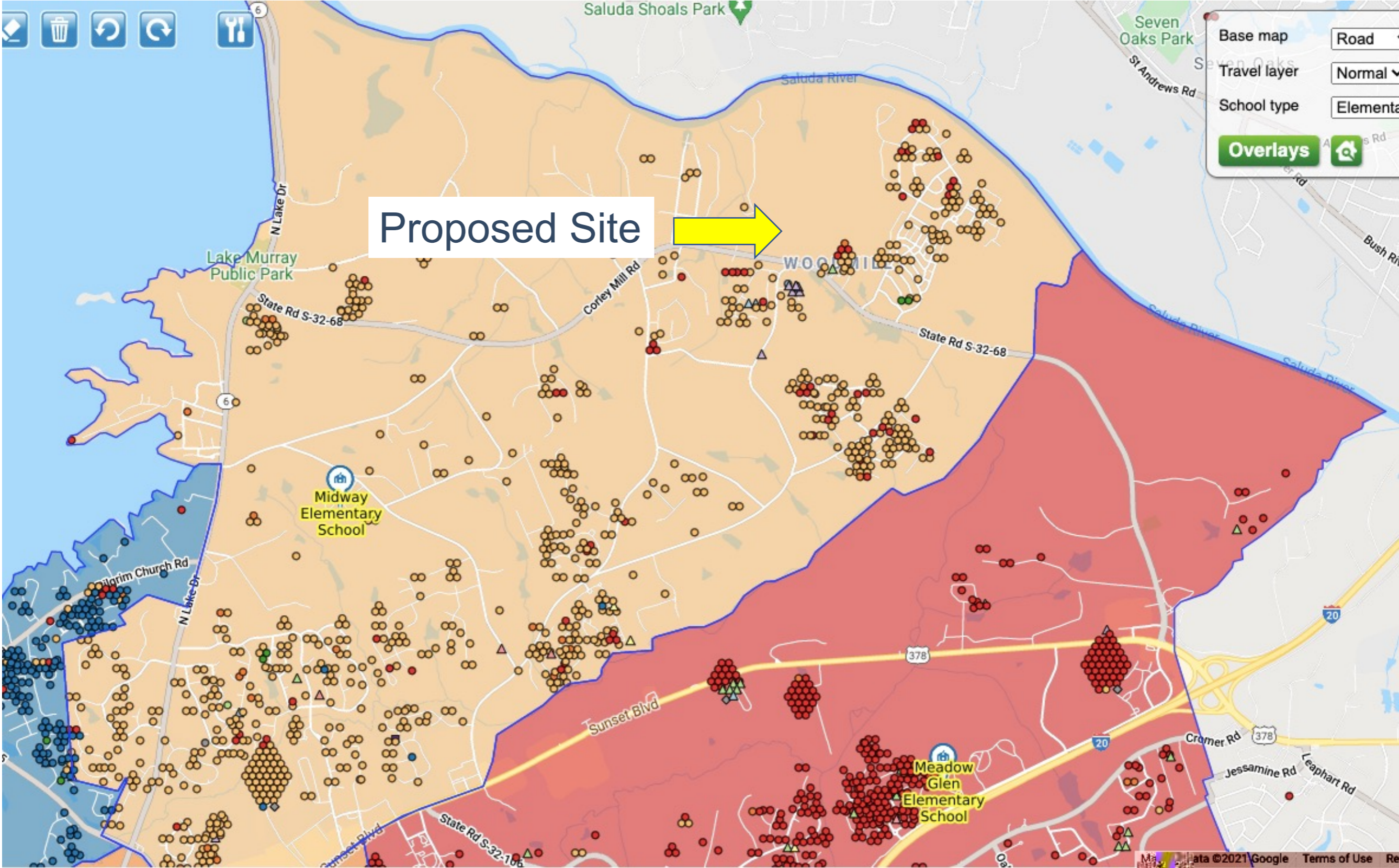
Route ID: Secondary road 28 Main Line

Good from S- 874 (HOSPITAL RD) TO US 378 (SUNSET BLVD)

County: LEXINGTON

Station Number: 434

Download the entire dataset [here](#).





# Questions

