



12/6/2022

# **CM@R Contractual Matter Related to Elementary School #19**

**Matt Warren, Interim Chief Operations Officer  
Jennifer Miller, Chief Financial Officer**

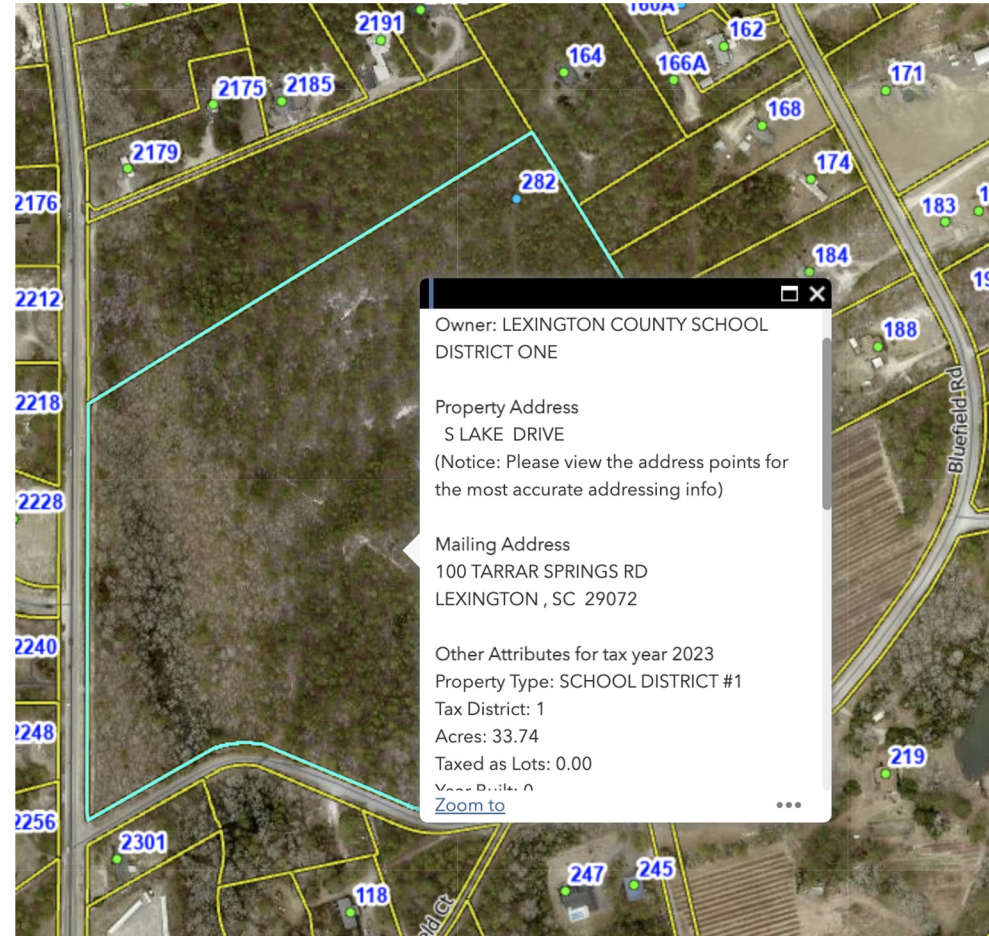
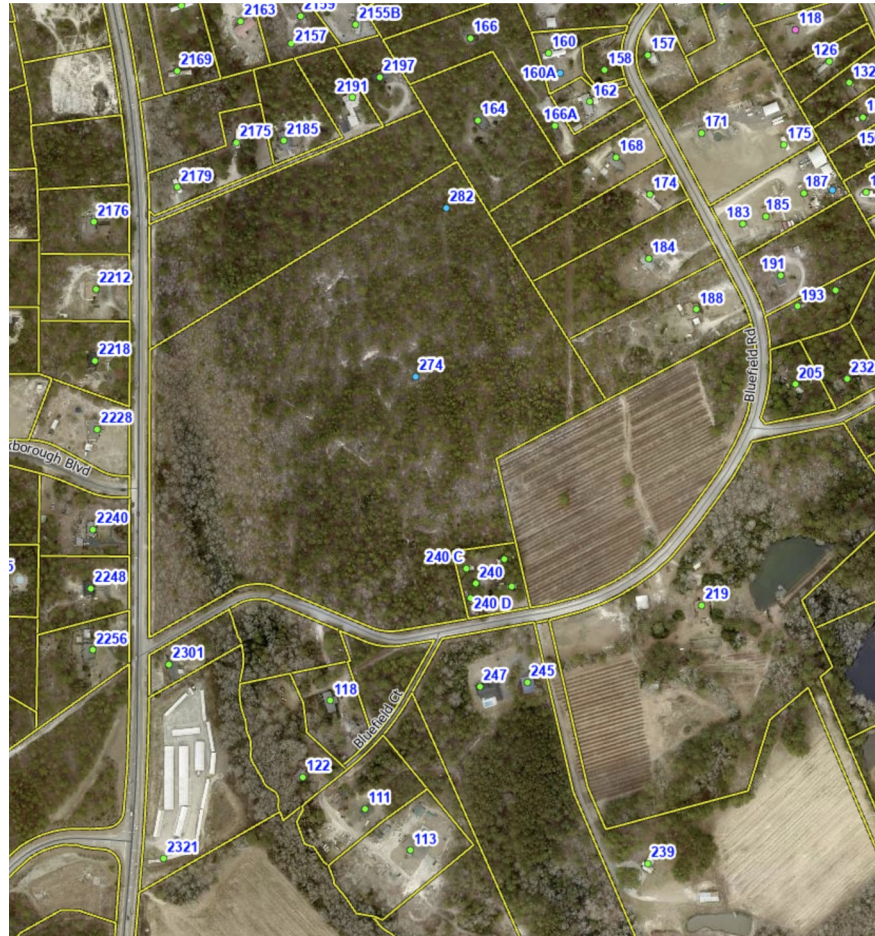
# Capital Project Report

October 31, 2022 Capital Project Report

# Budget Development

- Budget was developed through facilities study conducted by MB Kahn in 2017
- Construction management at risk project
- Budget allotted for ES19 is \$37,000,000
- Facilities plan estimated opening year as 2022–23
  - Pause in construction
  - COVID
  - District enrollment

# School Site



# School Site



# School Impact

- ES19 could provide relief for several schools in the Lexington/White Knoll Attendance Area
  - Carolina Springs, Deerfield, Pleasant Hill, and possibly Saxe Gotha
  - Attendance line review process will occur December 2023 through February 2024

# School Design / Timeline

- Prototype elementary school
  - RCES, MGES, DES, CES
  - 128,219 square foot facility
  - 1,000 student capacity
  - Jumper Carter Sease Architects
  - Thompson Turner Construction
- Break ground January 2023
- Opening August 2024

# School Design





# School Design



# Historical Construction Costs

School	Bid	Building Cost	Site Work Cost	Sq. Foot	Cost Per Sq Ft
Beechwood MS	2017	\$34,726,920	\$6,375,900	204,000	\$170.23
Centerville ES	2019	\$26,472,246	\$3,478,060	127,771	\$207.18
Pelion MS	2019	\$40,647,600	\$5,274,617	210,000	\$193.56
Lakeside MS	2021	\$41,060,180	\$16,318,289	214,000	\$191.87
<i>ES19 (2019)</i>	<i>2019</i>	<i>\$26,564,412</i>	<i>N/A</i>	<i>128,219</i>	<i>\$207.18</i>
<b>ES19 (2022)**</b>	<b>2022</b>	<b>\$40,461,682</b>	<b>\$8,588,826</b>	<b>128,219</b>	<b>\$316.57</b>

**\*\*3.5% escalation since April 2022**

# Total Cost ES19

Building Cost	\$40,461,682
Site Work Cost	\$8,588,826
Design/Inspection Fees	\$3,200,000
Furniture/Fixtures and Equipment	\$3,300,000
Estimated Total	\$55,550,508
<b>Total Cost for ES19</b>	<b>\$56,000,000</b>

# Funding

## Elementary School #19 Funding Options

## General Fund Balance Analysis

